



### **Temporary Closure of Roads**

**Roads Act 1993 – Section 75 Roads Regulations 1994 – Article 12**

### **Notice of Decision**

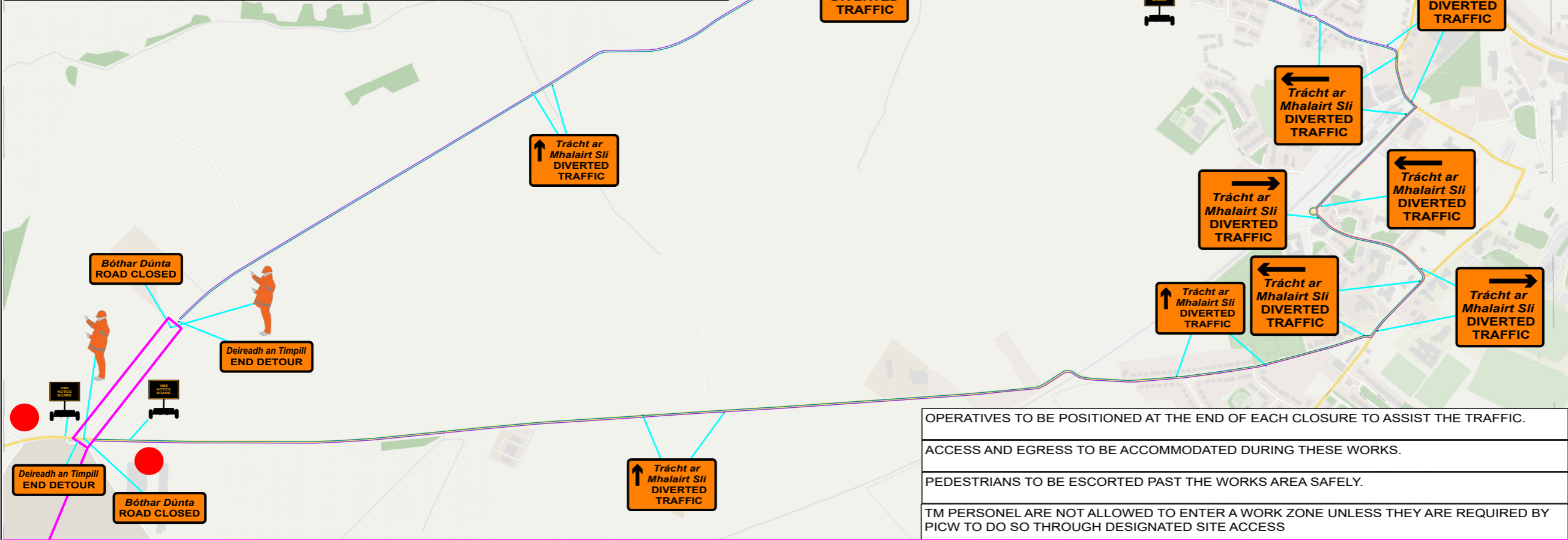
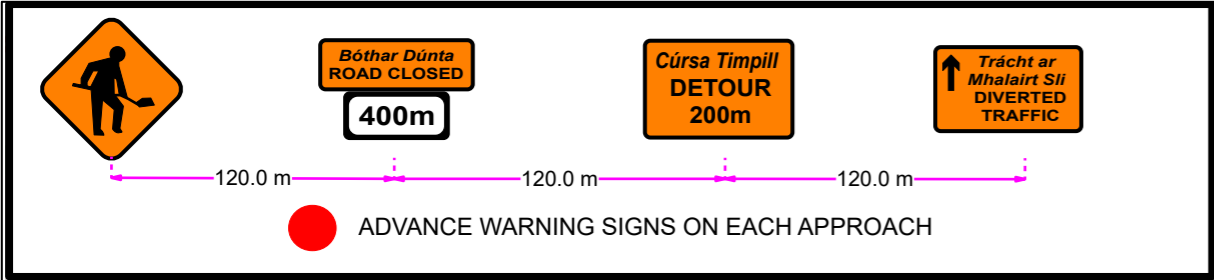
#### **Tuam Municipal District**

Notice is hereby given that Galway County Council has made an order closing the road at Cloonascragh leading to junction with the Athenry Road, Tuam (ESB substation on L-6141 to junction with R-347 Cloonascragh) from 7:00 p.m. on Wednesday 02/07/2025 to 7:00 p.m. on Saturday 02/08/2025 to carry out essential ESB trenching and ducting works.

#### **Alternative Route**

Please divert via;

R-347 Cloonascragh to Tuam town and L-2113 Cloontooa road - R347, R332, L-2113 to L-6141 at Cloonascragh ESB Station.

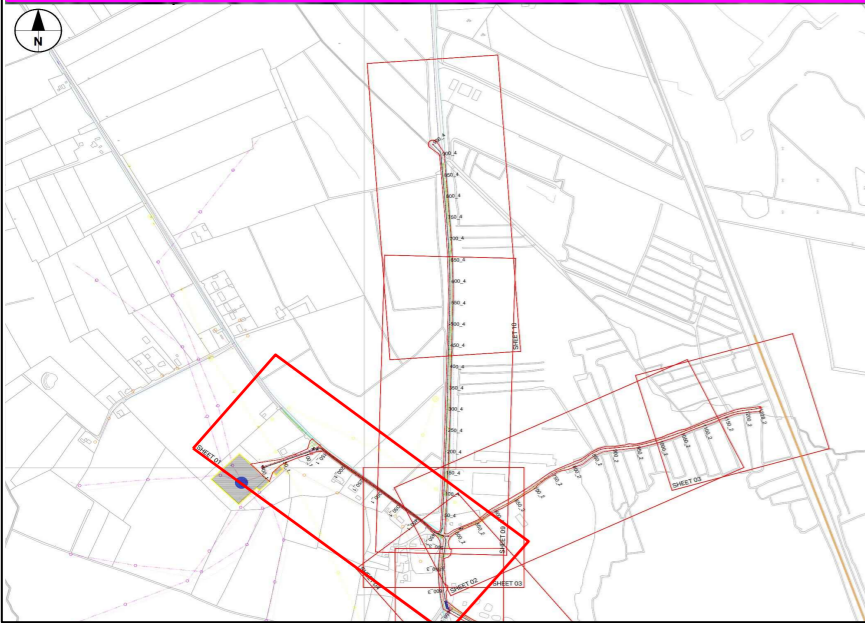


OPERATIVES TO BE POSITIONED AT THE END OF EACH CLOSURE TO ASSIST THE TRAFFIC.

ACCESS AND EGRESS TO BE ACCOMMODATED DURING THESE WORKS.

PEDESTRIANS TO BE ESCORTED PAST THE WORKS AREA SAFELY.

TM PERSONEL ARE NOT ALLOWED TO ENTER A WORK ZONE UNLESS THEY ARE REQUIRED BY PICW TO DO SO THROUGH DESIGNATED SITE ACCESS



PEDESTRIAN WALKWAY

RESIDENTS PARKING



## DESIGN PARAMETERS

ROAD LEVEL:	LEVEL 2(i)
ROADWORKS TYPE:	TYPE A
SPEED LIMIT:	80 km/h
TRAFFIC COUNT:	N/A

### TEMPORARY SIGNS

SIGN VISIBILITY:	90M
NUMBER OF SIGNS:	4
ADVANCE SIGN SPACING:	120M
MINIMUM SIGN SIZE:	750mm

### RATE OF TAPER

TAPER AT LANE:	N/A
TAPER AT HARD SHOULDER:	N/A
TRANSITION LENGTH:	N/A

### SAFETY ZONE

LONGITUDINAL:	N/A
LATERAL:	N/A

### MINIMUM CONE SPACING

AT TAPER:	N/A
LONGITUDINAL:	N/A

### LAMP SPACING DURING HOURS OF DARKNESS

AT TAPER:	N/A
LONGITUDINAL:	N/A
MIN LANE WIDTH:	N/A

### DESIGN

METHOD:	DIVERSION
---------	-----------

### Legend

- Barrier
  - Pedestrians
  - Route 2
  - Parking Space
  - Route 1
  - Work Area
- VMS NOTICES BOARD x 3

Richard Nolan  
civil engineering

RN  
CE



Client:		ESB			
Project:		60691388-ACM			
Title:		TRENCHING AND DUCTING			
Director:	DN	Proj. Man:	PG	Checked:	PG
Scale:	1 : 1500	Drafted by:	MC	Date:	06/03/2025
Drawing No:		11111 - TMP 001			
REV:	DESCRIPTION:	By:	Check:	Date:	
000	INITIAL ISSUE	MC	PG	06/03/20	